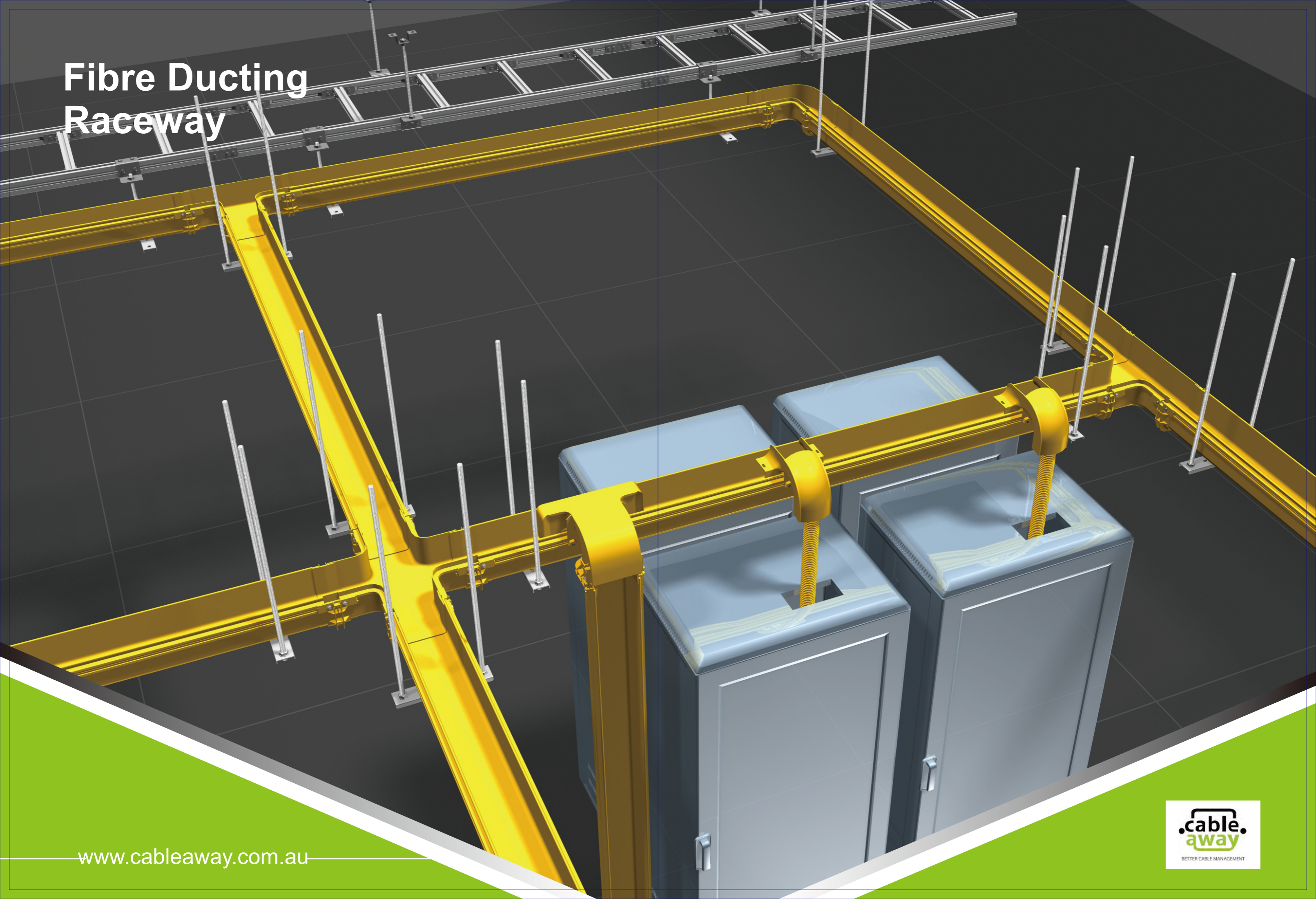


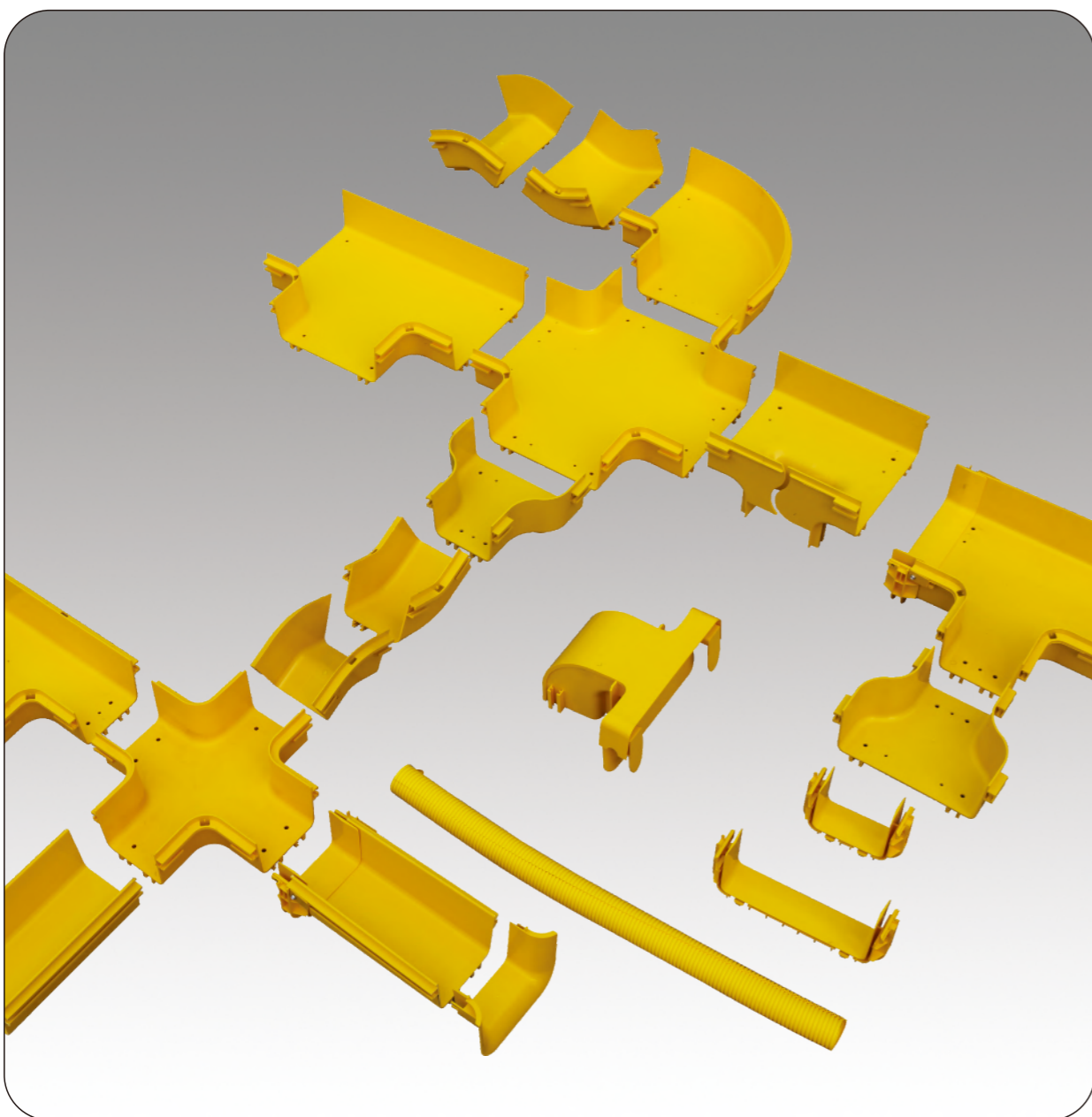
# Fibre Ducting Raceway





**Introduction**

1. Fibre duct is a system designed to protect and route fiber optical patch cords, cable assemblies from an ODF, network cabinet or other device.
2. Fibre duct offers an ideal solution for optical raceway requirements and applications with its design, appearance and ease of maintenance.
3. Flame-retardant materials rated GB/T2048-2008 FV-0.
4. Materials: 1) Straight Sections: PVC, 2) Accessories ABS

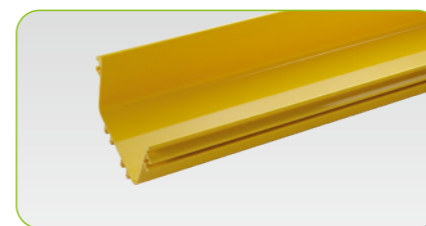


**CF120**

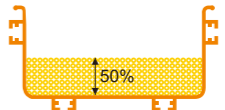
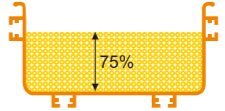
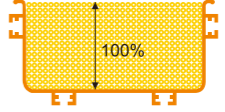
Name: 120mm FIBRE DUCT

Dimension:

- Height: 100mm
- Width: 120mm
- Length: 2000mm



**Fibre loading capacity**

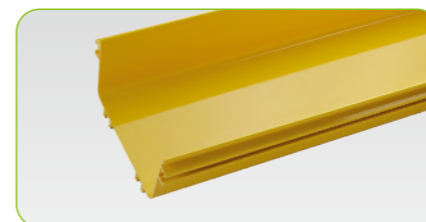
	2mm Fibre	3mm Fibre
	955	424
	1433	636
	1910	848

**CF240**

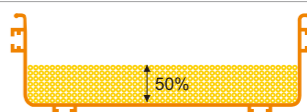
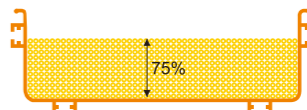
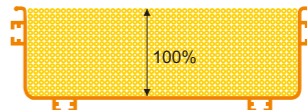
Name: 240mm FIBRE DUCT

Dimension:

- Height: 100mm
- Width: 240mm
- Length: 2000mm



**Fibre loading capacity**

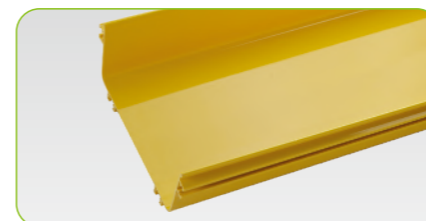
	2mm Fibre	3mm Fibre
	1910	849
	2866	1273
	3821	1698

**CF300**

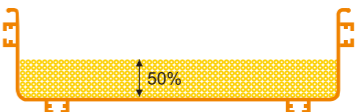
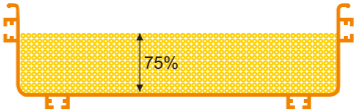
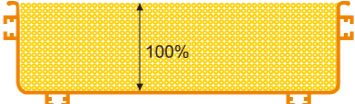
Name: 300mm FIBRE DUCT

Dimension:

- Height: 100mm
- Width: 300mm
- Length: 2000mm

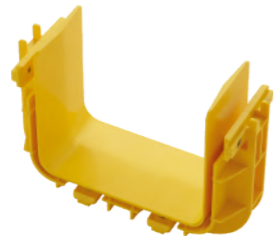


**Fibre loading capacity**

	2mm Fibre	3mm Fibre
	2370	1055
	3556	1578
	5136	2106

Accessories

**CF120-CNT**  
**CF240-CNT**



Name: Connector

**CF120-ELB90**  
**CF240-ELB90**



Name: 90° Horizontal Bend

**CF120-TEE**  
**CF240-TEE**



Name: Horizontal Tee

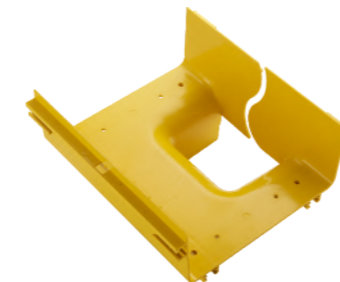
Accessories

**CF120-CRS**  
**CF240-CRS**



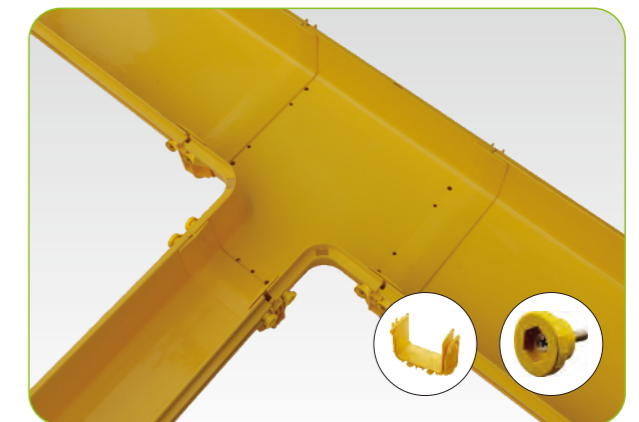
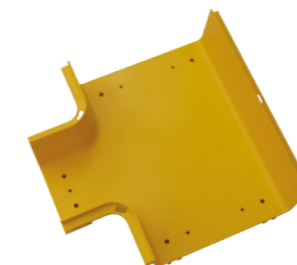
Name: Horizontal Cross

**CF240-VTC120**



Name: 240 to 120 Vertical T

**CF240-HTC120**



Name: 240 to 120 Level T

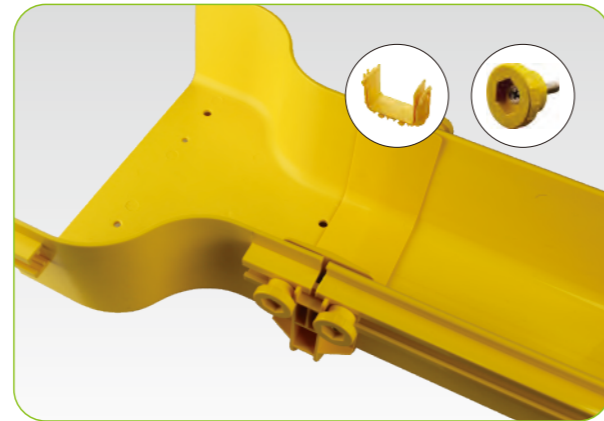


Accessories

**CF240-RDC120**



Name: Reducer



**CF120-TSP**  
**CF240-TSP**



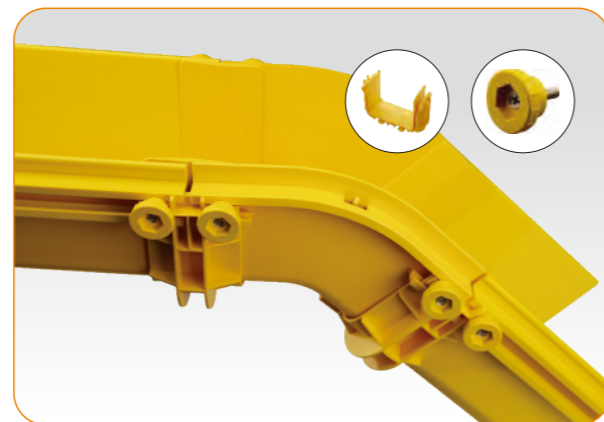
Name: Trumpet / End Flare



**CF120-ERS45**  
**CF240-ERS45**

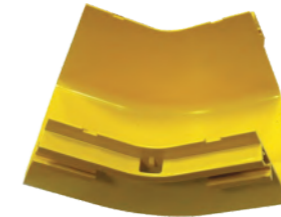


Name: External Riser 45°

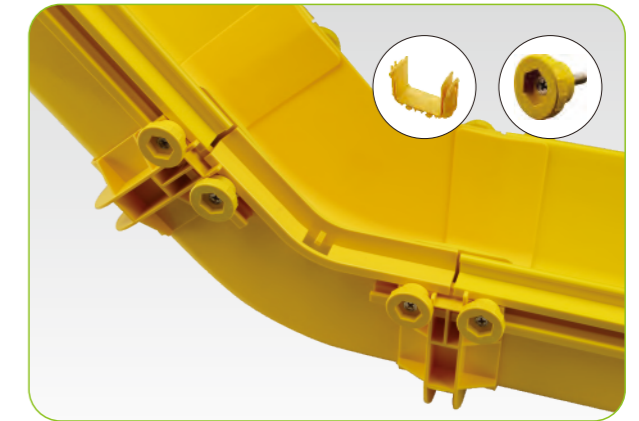


Accessories

**CF120-IRS45**  
**CF240-IRS45**



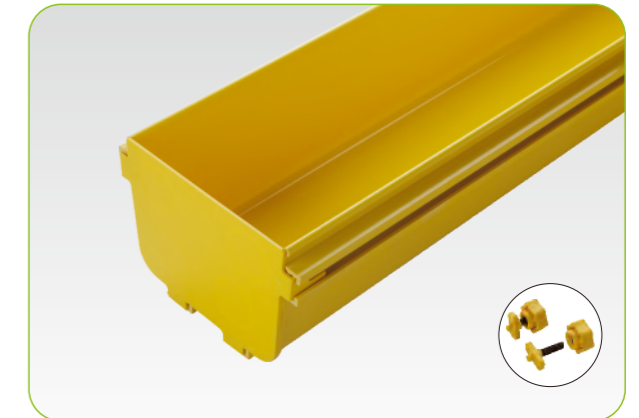
Name: Internal Riser 45°



**CF120-TTR**  
**CF240-TTR**



Name: End Cap



**CF-OUT55**



Name: Movable Cable Exit Kit With Tube

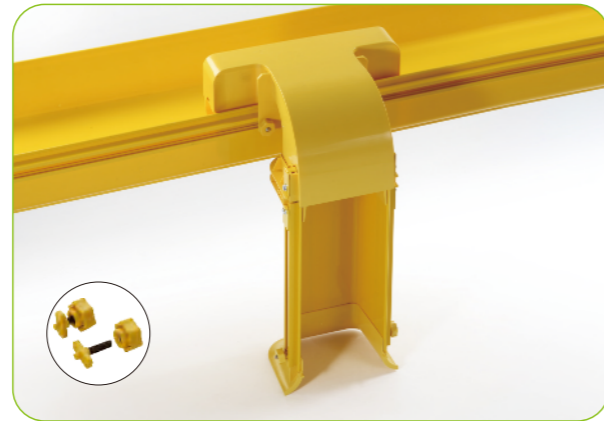


Accessories

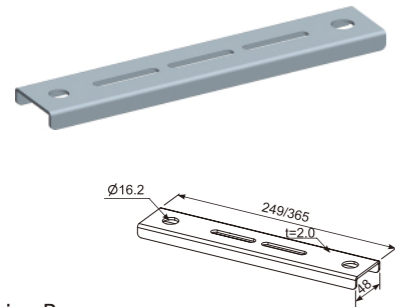
**CF-OUT120**



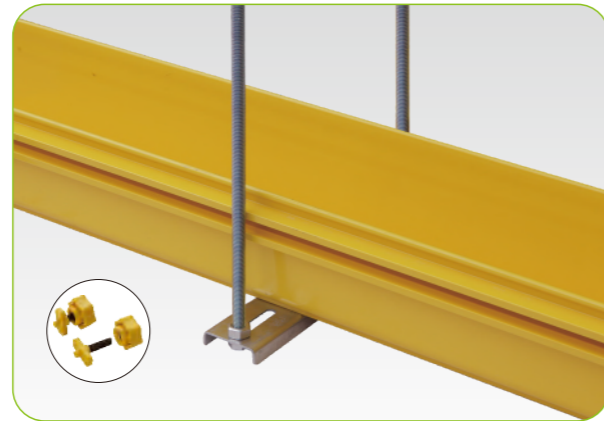
Name: High Capacity Movable Cable Exit Kit



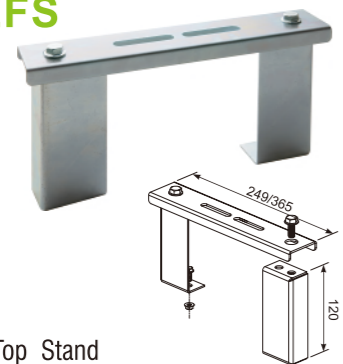
**CF120-BAR**  
**CF240-BAR**



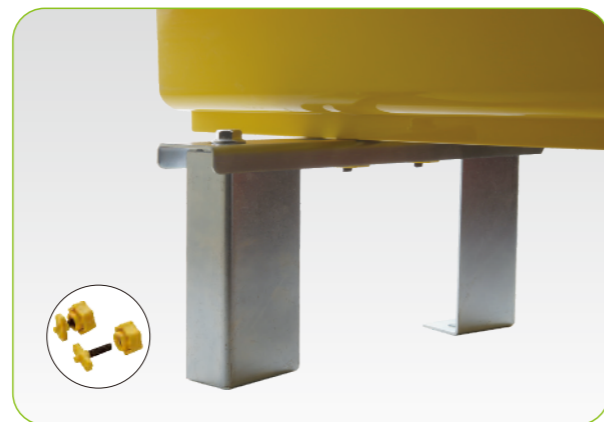
Name: Hanging Bar



**CF120-EFS**  
**CF240-EFS**



Name: Cabinet Top Stand

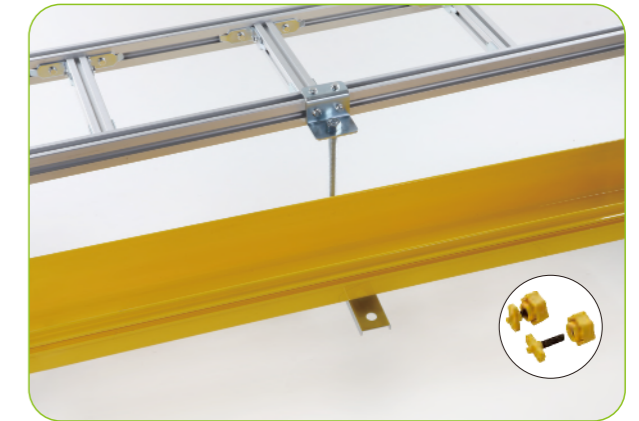


Accessories

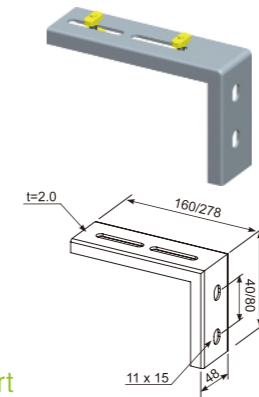
**CF120-HGS**  
**CF240-HGS**



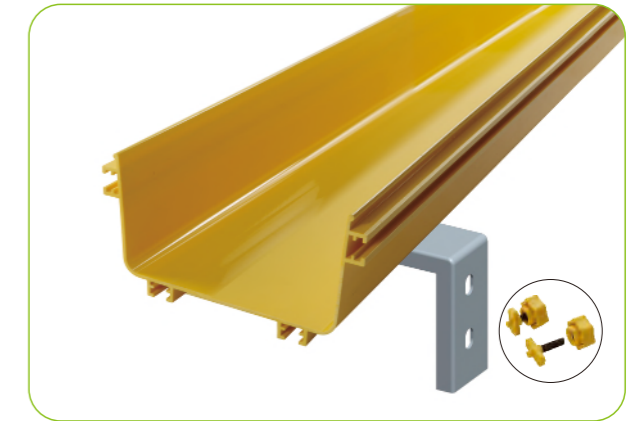
Name: Hanging Set



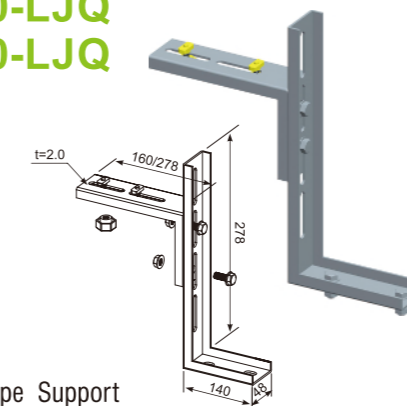
**CF-L120**  
**CF-L240**



Name: L-Type Support



**CF120-LJQ**  
**CF240-LJQ**

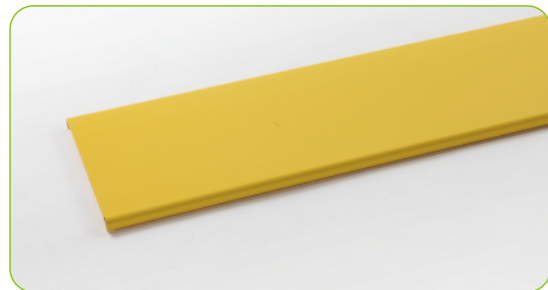


Name: L-Type Support

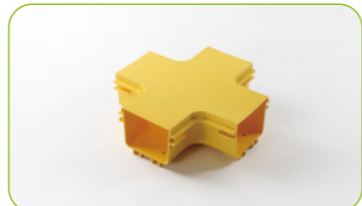
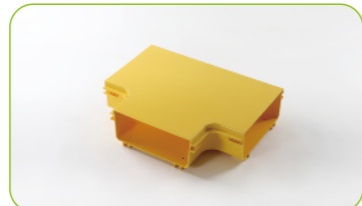
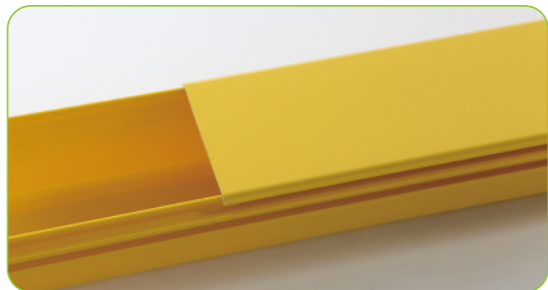




### Accessories



**CF-CVR**  
Name: Cover



**CF-ELB90-CVR**  
Name: Horizontal Bend Cover

**CF-TEE-CVR**  
Name: Horizontal Tee Cover

**CF-CRS-CVR**  
Name: Horizontal Cross Cover



**CF-IRS45-CVR**  
Name: Internal Riser 45°

**CF-ERS45-CVR**  
Name: External Riser 45°

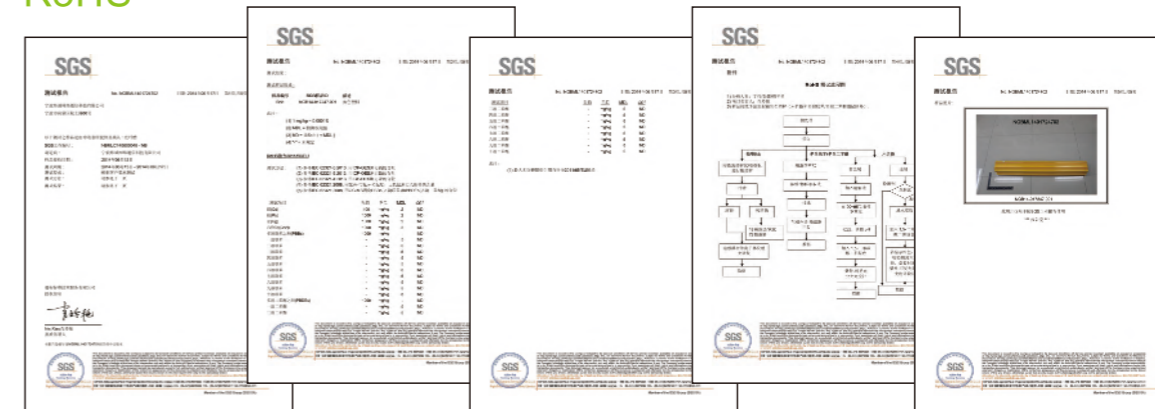
**CF240-RDC120-CVR**  
Name: Reducer Cover

### Certifications

#### CE



#### RoHS



#### SGS Test Report

